



Palliative and Supportive Care Education.

Semester One
January - June 2020

Cancer Council WA would like to acknowledge the support of:



Government of **Western Australia**
Department of **Health**
WA Cancer and Palliative Care Network



Contents.

- 1** About Us
- 2** How to Use
- 3** Calendar at a Glance
- 5** Foundations
- 8** PEPA Workshops
- 11** Consolidation
- 19** Extension
- 22** Clinicians Communication Program (CCP)
- 24** Volunteers in Palliative Care
- 26** Video Conference
- 29** How to Register
- 30** Program of Experience in the Palliative Approach (PEPA)
- 32** Culturally Appropriate Palliative Care in the West Kimberley
- 33** Pharmacological Interventions for Palliative Care Symptoms
- 33** Opioid Conversion video
- 34** McLarty Palliative Care Scholarships
- 35** Palliative Care Quality Improvement (PCQI) Scholarship
- 36** Interprofessional Spiritual Care Education Curriculum (ISPEC)
- 37** International Conference on Grief and Bereavement in Contemporary Society
- 38** Australian Centre for Grief and Bereavement (ACGB)
- 40** CareSearch - Palliative Care Knowledge Network
- 41** PalliAGED - Palliative Care Aged Care Evidence
- 42** End-of-Life Essentials
- 43** Palliative Care Outcomes Collaboration (PCOC)
- 44** The Advance Project™
- 45** Palliative Care WA
- 46** Information
- 47** Education
- 48** Getting to Cancer Council WA

All efforts have been made to ensure information is correct at time of printing.

About Us.

Palliative and Supportive Care Education (PaSCE)

Evidence-based palliative care education for health professionals, health care workers and palliative care volunteers across WA.

Our Professional Development Workshops aim to increase knowledge and understanding of palliative care for all health professionals caring for any person with a life-limiting illness in all settings.

The education programs are facilitated by project officers in collaboration with expert palliative care clinicians, researchers and health professionals.

PaSCE looks to work collaboratively with education providers to improve and develop our programs to meet the growing demand for palliative and supportive care education.

Cancer Council Western Australia provides opportunities to advance your post graduate education. McLarty Palliative Care scholarships (page 34) are offered to registered nurses and allied health professionals.

PaSCE is supported by Cancer Council WA and the WA Cancer and Palliative Care Network (WACPCN), WA Department of Health.

Registering for all PaSCE events and workshops is essential

Please ensure that you register all participants' contact details to ensure that they receive all the required event information directly.

Unfortunately we have had an increasing amount of "No Shows" at our events during 2019. PaSCE will be charging a non-attendance fee for all events where there has been no notice of cancellation prior to the event. The fee will be the cost of the event or \$20 per person for free events.



Online Registration

Please note, all workshops are booked online via Eventbrite. Simply enter <https://bit.ly/pasce1> into your search engine, this will link you to our health professional's calendar.

Refer to *How to Register* on page 29.

How to Use.

This booklet outlines PaSCE events to be delivered during the first half of 2020. Flyers for all events will be distributed prior to the advertised date.

The colour coding system assists you to tailor your palliative care education requirements by identifying the appropriate events and workshops.

Foundations

Entry Level Palliative Care Education

Consolidation

Building Upon Foundation Units or Existing Palliative Care Knowledge

Extension

Extending and Expanding Palliative Care Knowledge

PEPA Workshops

Program of Experience in the Palliative Approach

Clinicians Communication Program (CCP)

Experiential, Facilitated Learning Experience

Volunteers in Palliative Care

Palliative Care Volunteer Education

Video Conference

Monthly Palliative Care Education Accessed via the Cancer Council WA Telehealth Site

Calendar at a Glance.

January - June 2020

FEBRUARY		
Prescribing Medicinal Cannabinoids in Palliative Care	Tues 4 February	Video conference
Clinicians Communication Program "Eliciting and Responding to Emotional Cues"	Wed 12 February	Communication
Update and Q&A with PCOC	Thur 13 February	Video conference
Principles of Palliative Care Module 1 - <i>Kalamunda</i>	Mon 24 February	Foundations
Spotlight on Palliative Care Research: A Systematic Review Study about the Experience and Perception of Chinese Immigrants	Thur 27 February	Video conference
MARCH		
Emergencies in Palliative Care	Wed 4 March	Extension
Communication for Senior Staff in Aged Care	Wed 11 March	Consolidation
Clinicians Communication Program "Eliciting and Responding to Emotional Cues"	Thur 12 March	Communication
Ways of Working with Grief and Loss in Aboriginal Communities	Thur 19 March	Extension
Principles of Palliative Care Module 2 - <i>Kalamunda</i>	Mon 23 March	Foundations
Volunteering in Palliative Care	Wed 25 March	Volunteers
APRIL		
Psychosocial Support in Cancer and Palliative Care for the Patient	Wed 8 April	Video conference
Understanding a Palliative Approach	Tues 28 April	Video conference
Clinicians Communication Program "Eliciting and Responding to Emotional Cues"	Tues 28 April	Communication
MAY		
Principles of Palliative Care Module 1	Mon 4 May	Foundations

Continued on next page

Goals of Care (GoC): What is this and What Does it Mean for Primary Care?	Wed 6 May	Video conference
Communication in Aged Care	Tues 12 May	Consolidation
Tools and Skills for Embedding Palliative Care for Residential Aged Care Providers - A Clinical Focus	Wed 13 May	Consolidation
Clinicians Communication Program "Eliciting and Responding to Emotional Cues"	Thur 14 May	Communication
Nutrition and Hydration in Palliative Care	Mon 25 May	Consolidation
Clinicians Communication Program "Eliciting and Responding to Emotional Cues"	Wed 27 May	Communication
JUNE		
Palliative Care: A Focus on Depression and Anxiety	Thur 4 June	Consolidation
Principles of Palliative Care Module 2	Mon 15 June	Foundations
Clinicians Communication Program "Eliciting and Responding to Emotional Cues"	Tues 23 June	Communication
Volunteering in Palliative Care	Thur 25 June	Volunteers
Spotlight on Palliative Care Research - Goals of Patient Care and Mindfulness-Based Compassion	Tues 30 June	Video conference

Additional education opportunities will be available throughout the semester. Please refer to our website below to keep updated.

cancerwa.asn.au/articles/calendar/calendar-health-professional-training-seminars-and



Cancer Council Western Australia

Palliative and Supportive Care Education

Level 1, 420 Bagot Road, Subiaco

Phone: 08 9382 9300

Fax: 08 9212 4334

Email: pasce@cancerwa.asn.au

cancerwa.asn.au/professionals/pasce

FOUNDATIONS.

Entry Level Palliative Care Education

Principles of Palliative Care

Entry Level Palliative Care Education

Module 1



Date

Mon 24 February

Kalamunda Hospital
Elizabeth Street
KALAMUNDA

OR

Mon 4 May

Seminar Room
Cancer Council WA
15 Bedbrook Place
SHENTON PARK

Time

Registration 8.15am
8.30am - 4.00pm

Catering

Morning tea and
lunch provided

Cost

\$95 (inc. GST)

Online Registration

<https://bit.ly/pasce1>

Designed for

Doctors, Registered Nurses, Enrolled Nurses,
Allied Health Professionals, Facility Managers,
Pastoral Care Workers, Aboriginal Health
Workers

Overview

This workshop is an introduction to palliative care which prides itself on being multi-disciplinary. Module 1 covers areas of practice and improving patient outcomes via a palliative approach.

Learning areas

This module comprises four units:

1. A palliative approach
2. Communication
3. Loss, grief and bereavement
4. Self-care

Presented by

Natalie Panizza
Palliative Care Nurse Practitioner

***We recommend completing
Module 1 and 2***

Principles of Palliative Care

Entry Level Palliative Care Education

Module 2



Date

Mon 23 March

Kalamunda Hospital
Elizabeth Street
KALAMUNDA

OR

Mon 15 June

Seminar Room
Cancer Council WA
15 Bedbrook Place
SHENTON PARK

Time

Registration 8.15am
8.30am - 4.00pm

Catering

Morning tea and
lunch provided

Cost

\$95 (inc. GST)

Online Registration

<https://bit.ly/pasce1>

Designed for

Doctors, Registered Nurses, Enrolled Nurses,
Allied Health Professionals, Facility Managers,
Pastoral Care Workers, Aboriginal Health
Workers

Overview

Continuing on from Module 1, this workshop focuses on patient care and quality of life. It includes terminal and end of life care.

Learning areas

This module comprises three units:

1. Advance care planning
2. Assessment and symptom management
3. Continuum of Care inclusive of end of life and terminal care

Presented by

Natalie Panizza
Palliative Care Nurse Practitioner

***For aged care specific education
opportunities see pages 9 - 16***

Palliative Care in Residential Aged Care



Date

Wed 29 January
OR
Tues 3 March

Time

Registration 8.45am
9.00am - 1.30pm

Venue

Seminar Room
Cancer Council WA
15 Bedbrook Place
SHENTON PARK

Catering

Morning tea provided

Cost

Free (funded by PEPA)

Online Registration

[eventbrite.com.au/o/
pepa-wa-15457123732](https://eventbrite.com.au/o/pepa-wa-15457123732)

Designed for

Health Care Professionals working in aged care facilities; Registered Nurses, Enrolled Nurses, Facility Managers, Allied Health Professionals and Patient Care Assistants

Overview

Come and join us for an interactive session, utilising group discussion and case studies to provide participants with a greater understanding of palliative care and how it can be implemented within the aged care facilities they work.

Learning areas

1. Palliative approach in aged care
2. Communication skills
3. Advance care planning
4. Symptom recognition and understanding
5. End of life care

Presented by

Ed Gaudoin
Clinical Nurse

Tina Dobrin
Social Worker

Metropolitan Palliative Care Consultancy Service (MPaCCS)

Culture Centred Palliative Care

An Aboriginal Perspective



Date

Day 1: Mon 23 March
Day 2: Wed 25 March

Time

Registration 8.45am
9.00am - 3.30pm

Venue

Seminar Room
Cancer Council WA
15 Bedbrook Place
SHENTON PARK

Catering

Morning tea and
lunch provided

Cost

Free (funded by PEPA)

Online Registration

[eventbrite.com.au/o/
pepa-wa-15457123732](https://eventbrite.com.au/o/pepa-wa-15457123732)

Designed for

All Health Professionals working with Aboriginal clients and their families

Overview

This two-day workshop is designed for health professionals working with Aboriginal clients to develop their skills in caring for Aboriginal people and their families facing a life limiting-illness and will explore the topic of cultural awareness in palliative care. The workshop will be presented by a variety of Specialists utilising case studies and group discussion.

Learning areas

1. Introduction to Aboriginal history and culture
2. An introduction to culturally appropriate palliative care
3. Exploring end of life care for Aboriginal clients and their families
4. Caring for remote Aboriginal clients in Perth
5. Sorry business: loss, grief and bereavement

Presented by

Danny Ford
Kambarang Services

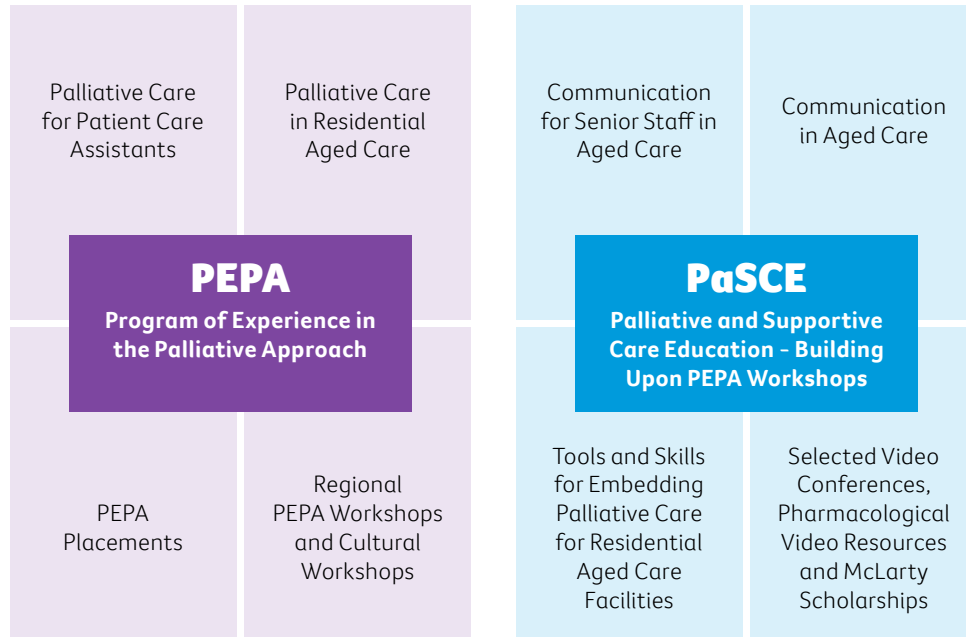
Lenny Papertalk and Marilyn Lynford
WA Centre for Rural Health

CONSOLIDATION.

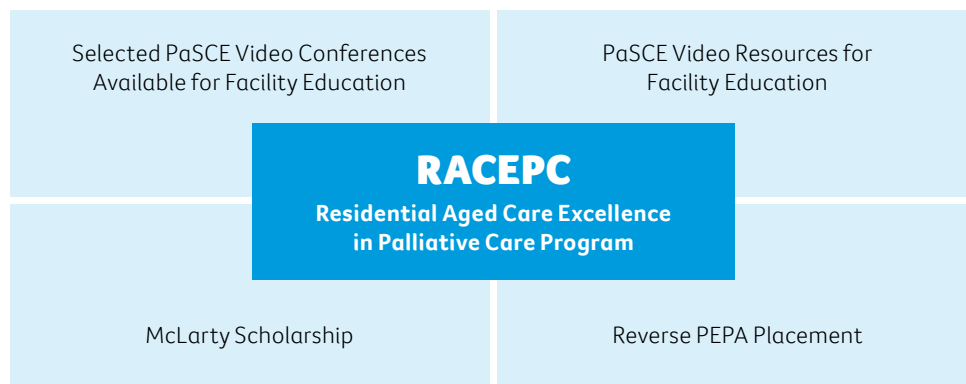
Building Upon Foundation Units or Consolidating Existing Palliative Care Knowledge

Palliative Care Education Opportunities for Residential Aged Care Facilities and Staff.

Individual Palliative Care Opportunities



Facility Aged Care Opportunities



Communication for Senior Staff in Aged Care

Interactive Communication Skills Workshop Specifically for Aged Care



Date

Wed 11 March

Time

Registration 8.45am
9.00am - 4.00pm

Venue

Seminar Room
Cancer Council WA
15 Bedbrook Place
SHENTON PARK

Catering

Morning tea and lunch provided

Cost

Free

Online Registration

<https://bit.ly/pasce1>

Designed for

Health Care Professionals working in aged care facilities; Facility Managers, Doctors, Senior Registered Nurses, Senior Allied Health Professionals and Registered Nurses responsible for family meetings

Would you be surprised if your patient died within the next six months?... How do I have the conversations?... I don't have time for this conversation!

Overview

A safe space to discuss death and dying. This interactive workshop highlights challenges and concerns in discussing death and dying with teams, residents and families. A scenario-based workshop utilising current evidence-based tools.

Learning areas

1. Determining the need to have the conversations
2. How to have the conversations
3. Theory behind good communication
4. Why good communication matters

Presented by

Grace Buchanan
Communication Facilitator and Palliative and Supportive Care Education Manager
Cancer Council WA

Tina Dobrin
Senior Social Worker
Specialist Palliative Care team

Communication in Aged Care

Interactive Communication Skills Workshop Specifically for Aged Care Staff



Date

Tues 12 May

Time

Registration 8.45am
9.00am - 4.00pm

Venue

Seminar Room
Cancer Council WA
15 Bedbrook Place
SHENTON PARK

Catering

Morning tea and
lunch provided

Cost

Free

Online Registration

<https://bit.ly/pasce1>

Designed for

Registered Nurses, Enrolled Nurses, Patient Care Assistants, Assistants in Nursing, Allied Health Professionals

Would you be surprised if your patient died within the next six months?... How do I have the conversations?

Overview

A safe space to discuss death and dying. This interactive workshop highlights challenges and concerns in discussing death and dying with teams, residents and families. A scenario-based workshop utilising current evidence-based tools.

Learning areas

1. Determining the need to have the conversations
2. How to have the conversations
3. Theory behind good communication
4. Why good communication matters

Presented by

Grace Buchanan
Communication Facilitator and Palliative and Supportive Care Education Manager
Cancer Council WA

Tina Dobrin
Senior Social Worker
Specialist Palliative Care team

Tools and Skills for Embedding Palliative Care for Residential Aged Care Providers - A Clinical Focus



Date

Wed 13 May

Time

Registration 8.45am
9.00am - 1.00pm

Venue

Seminar Room
Cancer Council WA
15 Bedbrook Place
SHENTON PARK

Catering

Morning tea provided

Cost

Free

Online Registration

<https://bit.ly/pasce1>

Designed for

Health Care Professionals working in aged care facilities; Doctors, Facility Managers, Senior Registered Nurses and Registered Nurses responsible for family meetings

Overview

Residential aged care services face particular difficulties in palliative care, because permanent residents often have dementia and/or communication difficulties and complex care needs (AIHW 2018). In addition, there is a high burden of chronic disease and comorbidity in the residential aged care population (Hillen, Vitry & Caughey 2017).

Learning areas

1. Discussion to identify tools to embed a palliative approach within your facility
2. Expand upon foundational palliative care education for residential aged care
3. Outline available resources and services

Presented by

Claire Doyle
Palliative Care Nurse Practitioner

Residential Aged Care Excellence in Palliative Care (RACEPC) Program.

Do you want to develop palliative care excellence within your residential aged care facility?

The RACEPC Program has been developed in recognition of a need to embed a person centred palliative care approach. The education aims to support residential aged care staff to develop a person-centred palliative care approach to the care of your clients.

Based on a two day face-to-face workshop RACEPC offers mentoring, embedding support and ongoing education to upskill your team's palliative care skills, knowledge and confidence to provide your resident's palliative care to meet the National Standards.

Overview

- The workshop will support the recognition of the integral part a palliative approach plays in residential aged care.
- Understanding the guiding principles of residential aged care National Standards.
- Supporting and developing a multi-disciplinary palliative care link team to provide best care for residents and support to family and carers through open, compassionate communication.
- Understand the opportunity advance care planning provides to support client wishes through provision of their individualised palliative approach with optimal quality of life.
- Discuss and facilitate a collaborative network of community and computer based palliative care resources to underpin the provision of best care.
- The use of tools to identify clients that would benefit from a palliative approach, toward recognition of the terminal phase and excellence in end of life care.
- Drawing the messages together to recognise triggers in the client's changing condition and the transition toward the development of optimal palliative care.

To register your interest for the RACEPC Program contact PaSCE on 08 9382 9300 or email pasce@cancerwa.asn.au.

Nutrition and Hydration in Palliative Care



Date

Mon 25 May

Time

Registration 8.45am
9.00am - 1.00pm

Venue

Seminar Room
Cancer Council WA
15 Bedbrook Place
SHENTON PARK

Catering

Morning tea provided

Cost

\$65 (inc. GST)

Online Registration

<https://bit.ly/pasce1>

Designed for

Doctors, Registered Nurses, Enrolled Nurses, Facility Managers, Allied Health Professionals, Aboriginal Health Workers

Overview

This interactive workshop aims to look at the practical management associated with nutrition and hydration in palliative care.

Learning areas

1. A palliative approach and phases of palliative care
2. The nutritional management at each phase
3. Practical management of nutritional needs
4. Advance care planning

Presented by

Sally Coppock
Clinical Nurse

Nicole Torre
Speech Pathologist

**Date**

Thur 4 June

Time

Registration 8.45am
9.00am - 11.00am

Venue

Seminar Room
Cancer Council WA
15 Bedbrook Place
SHENTON PARK

Cost

Free

Online Registration

<https://bit.ly/pasce1>

Designed for

Doctors, Registered Nurses, Enrolled Nurses, Allied Health Professionals, Pastoral Care Workers, Facility Managers, Aboriginal Health Workers, Counsellors

Overview

An important component of palliative care is addressing and responding effectively to psychological distress. In this session, we focus on the psychosocial care of depression and anxiety.

Learning areas

1. An overview of depression and anxiety in palliative care
2. Recognising depression and anxiety in your patient
3. Understanding the similarities and differences of the disorders
4. Identifying non-pharmacological management and strategies for each of the disorders

Presented by

Karen Anderson
Psychotherapist, Counsellor and Lecturer

EXTENSION.

Extending and Expanding Palliative Care Knowledge

Emergencies in Palliative Care



Date

Wed 4 March

Time

Registration 2.00pm
2.15pm - 4.00pm

Venue

Seminar Room
Cancer Council WA
15 Bedbrook Place
SHENTON PARK

Cost

Free

Online Registration

<https://bit.ly/pasce1>

Designed for

Doctors, Junior Doctors in: Haematology, Medical Oncology, Emergency Departments, Acute Medical Units and General Medical Teams and Paramedics

Learning areas

1. Gain or refresh your knowledge to be vigilant to the signs or symptoms of a palliative medical emergency in your patient
2. Maintain quality of life for a palliative patient and avoid unnecessary suffering
3. Understand and respect the patient's wishes and concerns
4. Know when to involve or link back into palliative care services

Presented by

Dr Yamin Myat Aye
Palliative Care Physician

Implementation Strategy and Palliative Care

Face-to-Face or Video Conference - Update presented by the WA Cancer and Palliative Care Network



Date

TBC

Time

TBC
2 hours

Venue

Seminar Room
Cancer Council WA
15 Bedbrook Place
SHENTON PARK

Cost

Free

Overview

Join us for an opportunity to hear the latest news and updates from our WA Cancer and Palliative Care Network.

Presented by

WA Cancer and Palliative Care Network
Policy Unit, Health Networks

Clinical Leadership and Reform

Clinical Excellence Division

WA Department of Health

Ways of Working with Grief and Loss in Aboriginal Communities



Date

Thur 19 March

Time

Registration 8.45am
9.00am - 4.00pm

Venue

Seminar Room
Cancer Council WA
15 Bedbrook Place
SHENTON PARK

Catering

Morning tea and
lunch provided

Cost

\$95 (inc. GST)

Online Registration

<https://bit.ly/pasce1>

Designed for

Doctors, Registered Nurses, Enrolled Nurses, Allied Health Professionals, Pastoral Care Workers, Facility Managers, and Psychologists working with Aboriginal patients with a life limiting-illness

Overview

Health professionals who are working with Aboriginal patients with a life limiting-illness strive for culturally safe care.

Being able to support Aboriginal people dealing with grief, loss and trauma requires an understanding of these issues as experienced by Aboriginal individuals, families and communities. This one-day workshop is informed by the latest research and best-practice, and provides opportunities for participants to consider relevant cases or issues they've encountered.

Learning areas

1. Identifying and describing grief, loss and trauma
2. Understanding the relevance of current grief and loss theory to the cultural, social and emotional wellbeing of Aboriginal community members
3. Discussing the applications of grief and loss supports for Aboriginal community members
4. Exploring the role of the health professionals in providing appropriate support

Presented by

Angela Ryder
Manager of Aboriginal Programs

Lauren Breen
Registered Psychologist, Fellow of Thanatology

CLINICIANS COMMUNICATION PROGRAM (CCP).

Experiential, Facilitated Learning Experience

Communication Workshop

Clinicians Communication Program (CCP)
“Eliciting and Responding to Emotional Cues”



2020 Dates

FEBRUARY

Wed 12

MARCH

Thur 12

APRIL

Tues 28

MAY

Thur 14

OR

Wed 27

JUNE

Tues 23

Time

Registration 8.15am
8.30am - 1.00pm

Venue

Seminar Room
Cancer Council WA
15 Bedbrook Place
SHENTON PARK

Catering

Morning tea provided

Cost

\$100 (inc. GST)

Online Registration

<https://bit.ly/pasce1>

Designed for

Doctors, Registered Nurses, Enrolled Nurses,
Allied Health Professionals

Overview

Undertaking CCP skills training can:

- Enhance your communication skills and improve your resilience
- Allow you to discuss difficult issues more effectively with patients, their families and friends
- Improve patient understanding and satisfaction, facilitating shorter consultation times

This training involves experiential scenarios with a simulated patient (actor) so you can practise and receive feedback on your skills in a safe learning environment.

This experiential, interactive workshop is facilitated by trained CCP facilitators and simulated patients.

Maximum class size

Eight participants per session

VOLUNTEERS IN PALLIATIVE CARE.

Palliative Care Volunteer Education

Volunteering in Palliative Care

Volunteers Working in a Palliative Care Setting



Date

Wed 25 March
OR
Thur 25 June

Time

Registration 9.00am
9.15am - 2.30pm

Venue

Seminar Room
Cancer Council WA
15 Bedbrook Place
SHENTON PARK

Catering

Morning tea and
lunch provided

Cost

Free

Online Registration

<https://bit.ly/pasce1>

Requirement

Volunteers must be already working in a palliative care setting

Overview

This event will provide volunteers with knowledge and understanding of palliative care.

Learning areas

1. A palliative approach
2. The volunteer's role in palliative care
3. Boundaries and being part of the team
4. Communication skills
5. Loss, grief and bereavement
6. Self-care

Presented by

Grace Buchanan
Palliative and Supportive Care Education Manager
Cancer Council WA

VIDEO CONFERENCE.

Monthly Palliative Care Education Accessed via the Cancer Council WA Telehealth Site

Video Conference

Palliative Care Education for Health Professionals

Overview

These sessions will be presented by current practicing clinicians and researchers. Each session is designed for different audiences.

Date and Time	Title	Presenter
Tues 4 February 7.15am - 8.15am	Prescribing Medicinal Cannabinoids in Palliative Care - an Update for Health Professionals	Penelope Tuffin Advanced Practice Pharmacist Palliative Care and Pain Management
Thur 13 February 2.00pm - 3.00pm	Update and Q&A with PCOC	Tanya Pidgeon and Natalie Joseph Quality Improvement Facilitators
Thur 27 February 2.00pm - 3.00pm	Spotlight on Palliative Care Research: A Systematic Review Study about the Experience and Perception of Chinese Immigrants	Dr Ruth Wei Lecturer, Nursing
Wed 8 April 2.00pm - 3.00pm	Psychosocial Support in Cancer and Palliative Care for the Patient	James Penhale Clinical Psychologist
Tues 28 April 1.00pm - 3.00pm	Understanding a Palliative Approach	John Robinson Clinical Nurse Consultant, Palliative Care
Wed 6 May 7.15am - 8.15am	Goals of Care (GoC): What is this and What Does it Mean for Primary Care?	Dr Jacquie Garton-Smith Hospital Liaison GP and Clinical Lead for Primary Care Integration
Tues 30 June 2.00pm - 3.00pm	Spotlight on Palliative Care Research - Goals of Patient Care and Mindfulness-Based Compassion	Dr Kaaren Watts Behavioural Scientist

Video Conference

Palliative Care Education delivered via CCWA Telehealth

Online registration

Please note all workshops are booked online via Eventbrite. Participants can register either as a **Registered Site** or **Individual**.

A **Registered Site** is a group of individuals attending the video conference (VC) together through one meeting ID, managed by one main contact person. An attendance sheet is compulsory from individuals attending. Registering as an **Individual** is as one person per device (one meeting ID).

Simply enter <https://bit.ly/pasce1> into your search engine, this will link you to our health professional's calendar.

Registration process

Individual or site registration is a requirement of attendance.

Prior to the VC, a **meeting ID** to access the VC will be shared with the registered individual or site and the evaluation, handouts or any pre-reading will be emailed to the Registered Site or Individual.

The site will share all accompanying documentation with interested participants.

On completion of the VC the Registered Site must:

1. Return completed attendance sheet.
2. Ensure each participant submits an evaluation.

Access options

Device requirements: speaker, microphone and camera.

Please note instructions are sent with meeting ID number after registration.

1. Within the Department of Health, access is via the Telehealth sites.
2. On your PC or laptop install the SCOPIA Desktop Client.
3. Scopia Mobile is available for both Android and Apple products for use on an iPad or tablet.

Evaluation process

Every participant is invited to complete an evaluation form. Evaluations can be submitted through these three options:

1. Online via Survey Monkey.
2. Email electronically completed PDF.
3. Email scanned copy of completed evaluation.

Enquiries

Email pasce@cancerwa.asn.au or phone **08 9382 9300**.

How to Register.

Registration is essential for all education workshops

To register online:

- Enter <https://bit.ly/pasce1> into your search engine. This will direct you to the Cancer Council WA health professional's education calendar.
- Scroll down until you find the course you are interested in and click on the title of your chosen course.
- Scroll down to the online registration link.
- You will then be able to register for the event via the PaSCE Eventbrite page.
- Alternatively, via an electronic copy of the course booklet or flyer, click on the course date or Eventbrite link, this will link you directly to the registration page.
- Participants will be notified of any changes or updates.

Reschedule/cancellation policy

It may at times be necessary to reschedule or cancel advertised workshops. In the event that a workshop is cancelled, all enrolled participants will be notified and a full refund offered. Alternatively, participants will be offered a place in the next available workshop.

Cancellation of registration by participants is accepted until one business day prior to the workshop. A substitute participant can be sent in your place at any time, however, PaSCE administration must be advised of this change. If you are unable to attend on the day, please contact us on **08 9382 9300** or pasce@cancerwa.asn.au.

PaSCE will be charging a non-attendance fee for all events where there has been no notice of cancellation prior to the event. The fee will be the cost of the event or \$20 per person for free events.

Other information

- Events will commence at the stated starting time, so please arrive 15 minutes prior.
- Certificate of Attendance will be issued on the day stating the hours of continuing professional development completed.
- If you have any specific dietary requirements/allergies please inform us at time of registration.

PEPA Program of Experience in the Palliative Approach

Funded by the Australian Government Department of Health

Do you or your staff care for people who are at end of life?

The Program of Experience in the Palliative Approach (PEPA) is an education program designed to improve the quality, availability and access to Palliative Care for people who are dying and their families, by improving the skills and expertise of health practitioners and enhancing collaboration between service providers.

PEPA offers two to four day supervised clinical placements within a specialist palliative care service (inpatient and community settings). Participation in this program aims to enhance the health professional's knowledge and skills in the palliative approach to care and increase their awareness of palliative care resources and services available within WA.

Placements are available for primary care providers employed in health, aged or community care services (General Practitioners, Nurses, Nursing Assistants, Aboriginal Health Workers and Allied Health Professionals). Applications are welcome from professionals in regional and remote locations across WA and self-employed medical practitioners. Placements can be planned in metropolitan or regional WA.

Reverse PEPA placements are available for aged care regional and remote health settings across WA. Reverse PEPA placements entail a specialist palliative care staff member travelling to your facility to spend between two to four days at your facility. Placements can involve the palliative care staff member providing palliative care education sessions, mentoring, assessments and interventions (medical, physical, psychosocial, spiritual etc.), medication reviews, procedures and policy documentation, referral processes etc.

Fees

There is no fee for a placement attendance. PEPA is funded by the Australian Government Department of Health. Financial assistance for travel and accommodation is provided for regional health professionals. Reimbursement towards backfill is available for your employer for attendance at placements.

PEPA Program of Experience in the Palliative Approach

Funded by the Australian Government Department of Health

Maximum funding amounts and eligibility requirements apply. Continuing professional development points are allocated to this program from RCNA, RACGP, ACRRM and APHRA.

PEPA provides tailored Palliative Approach workshops for a variety of target groups around WA. Regional workshops are also available across the state. If your health service would like education delivered please contact the PEPA Coordinator (details below).

- Palliative Approach for Aboriginal Health Workers
- Palliative Approach for Allied Health Professionals
- Palliative Approach for Patient Care Assistants and Nurses
- Palliative Approach for Residential Aged Care
- Cultural Awareness in the Palliative Approach



CONTACT.

WA PEPA Coordinator

Phone: 08 9382 9372

Fax: 08 9212 4334

Email: pepa@cancerwa.asn.au

pepaeducation.com

Video Resource

Culturally Appropriate Palliative Care in the West Kimberley.

A PaSCE collaboration with the Yiriman Project

The Palliative and Supportive Care Education (PaSCE) team is proud to offer this educational video resource. The video is made for health professionals working with Aboriginal people, especially those originating from the West Kimberley region.

The ladies from the Yiriman Project wanted to be involved in this health professional resource and share their cultural beliefs and what is important to them around end of life care.

The Yiriman Project vision is...

“We are strong as four language groups working together, keeping our culture and languages alive. We are proud to be a voice for our people. Through the Yiriman Project we are building stories in our young people.”

This resource is for educational purposes only. It may contain images, works and descriptions that could be culturally sensitive and which might not normally be used in public and community contexts.



Cancer Council WA, Palliative and Supportive Care Education team wishes to thank everyone who contributed to this resource.

Cancer Council WA acknowledges the Yawuru people as the Traditional Custodians of the land where this resource was filmed. We would also like to pay respect to the elders past, present and emerging and offer our acknowledgement and respect to other Aboriginal and Torres Strait Islander people who were involved in the development of this resource.

This video resource can be accessed at cancerwa.asn.au/professionals/pasce/pasce-video-resources.

To find out more about this resource, please contact jess.park@cancerwa.asn.au or pasce@cancerwa.asn.au.



Video Resource

These video resources are for personal professional development or to be used as an education resource.

Presented by

Penelope Tuffin, Advanced Practice Pharmacist
Palliative Care and Pain Management

Penelope Tuffin divides her clinical time between Palliative Care Consultancy Teams at Fiona Stanley and Royal Perth Hospitals, the Palliative Care Unit at Bethesda Hospital and the Pain Team at Royal Perth Hospital. She provides advice, education and mentoring for health care professionals and undergraduate students throughout Western Australia.

Pharmacological Interventions for Palliative Care Symptoms.

A series of six

Topics

1. Medications at end of life
2. Pain management in palliative care
3. Nausea and vomiting in palliative care
4. Dyspnoea in palliative care
5. Delirium in palliative care
6. Constipation in palliative care

To view these videos, a form must be submitted. This can be accessed via our website <https://bit.ly/PasceSymptom>.

For further information contact jess.park@cancerwa.asn.au.

Opioid Conversion video.

To access the Opioid Conversion video, the preferred resource for use in Western Australia, the resource order form must be completed. This training video must be viewed before ordering the Opioid Conversion lanyard and teaching guide.

To view this video, a form must be submitted. This can be accessed via our website <https://bit.ly/PasceOpioid>.

For further information contact cathy.english@cancerwa.asn.au.

Disclaimer: content is correct at time of filming. All rights reserved by Penelope Tuffin and Cancer Council Western Australia.

McLarty Palliative Care Scholarships.

Are you a Registered Nurse or Allied Health Professional currently working in palliative care?

Are you interested in undertaking postgraduate study towards a palliative care qualification?

If so - Cancer Council WA invites you to apply for a McLarty Palliative Care Scholarship. McLarty Palliative Care Scholarships are awarded to Nurses and Allied Health Professionals who seek to improve their knowledge, skills and clinical practice in palliative care through the completion of a Postgraduate Certificate, Postgraduate Diploma or Masters of Palliative Care.

Eligibility criteria

All applicants must be:

- A Registered Nurse or Allied Health Professional employed in WA.
- An Australian citizen or have permanent residency status at the time of application.
- Enrolling or enrolled in a course that leads to an accredited tertiary qualification with a palliative care focus.
- Willing to submit a report following the scholarship and participate in scholarship evaluation.
- Able to submit the completed application form and enclose copies of relevant documentation.

For further information and to download the McLarty Scholarship guidelines and application form visit:

cancerwa.asn.au/professionals/cancercouncilwascholarships

NO CLOSING DATE

Applications accepted throughout the year.

Email applications to mclartyscholarship@cancerwa.asn.au or call 08 9382 9365.

Palliative Care Quality Improvement (PCQI) Scholarship.

What is the PCQI Scholarship?

The PCQI Scholarship, funded through the McLarty Bequest, offers specialist palliative care service providers an opportunity to facilitate the implementation and evaluation of a quality improvement initiative within their workplace. The scholarship provides funding for travel and accommodation costs to be used to enhance a current or proposed quality improvement initiative. It will enable the recipients to collaborate and meet with other palliative care providers that may already have a program, process or project that is already embedded within their workplace. The scholarship will only fund travel opportunities within Australia.

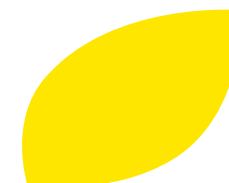
Who can apply for the scholarship?

A team or an individual working in a specialist palliative care service within WA (service must be Level 1, 2 or 3 as per Australian Palliative Care Standards). The applicant must have evidence of an identified or developed workplace quality improvement project that is supported by their employer. Applications are also encouraged from palliative care services in regional and remote locations across WA.

For further information and to download the PCQI Scholarship guidelines and application form please visit:

cancerwa.asn.au/professionals/cancercouncilwascholarships

Applications open from Monday 24 February 2020 and close on Friday 3 April 2020. Applications can be sent to emily.allen@cancerwa.asn.au or pasce@cancerwa.asn.au or call 08 9382 9365.



Interprofessional Spiritual Care Education Curriculum (ISPEC).

Expression of interest

The Interprofessional Spiritual Care Education Curriculum (ISPEC) is a theoretically and research-grounded curriculum for teaching interprofessional spiritual care. This curriculum forms the basis of a train-the-trainer program that is being provided by Cancer Council WA in collaboration with the George Washington Institute for Spirituality and Health Foundation (GWish) at the George Washington University. The program will be facilitated by Dr Christina Puchalski and co-facilitated with other experts in the field. Dr Puchalski is a pioneer and international leader of spirituality integration into health care in clinical settings and medical education. As Founder and Director of GWish and the Professor of Medicine at The George Washington University in Washington, DC, she continues to break new ground in the understanding and integration of spiritual care in health care.

Main ISPEC course objectives include:

- Review and implementation of spiritual guidelines.
- Defining spiritual distress in adults and children and distinguish the difference between spiritual distress and other types of distress.
- Recognising skills for practising compassionate presence.
- Identifying communication strategies for eliciting spiritual issues.
- Developing a whole person assessment and treatment or care plan.
- Recognising clinician's spirituality as an integral component of professional development.

Who can apply for ISPEC?

Doctors, Nurses, Social Workers, Psychologists, Chaplains and other health professionals working in palliative care. This program is designed for interprofessional pairs of clinicians although, individuals will be considered.

The program

A two-day workshop followed by completion of six online modules over 12 months with the support of ISPEC facilitators. Dates to be determined for the end of 2020.

To register your interest or get more information email emily.allen@cancerwa.asn.au or pasce@cancerwa.asn.au or phone 08 9382 9365.



12TH INTERNATIONAL CONFERENCE ON GRIEF AND BEREAVEMENT IN CONTEMPORARY SOCIETY

Grief and bereavement in a changing world:
Personal, social and global perspectives



The Australian Centre for Grief and Bereavement invites you to attend the 12th International Conference on Grief and Bereavement in Contemporary Society, to be held at the Melbourne Convention and Exhibition Centre from 13 - 17 July, 2020.

Every three years, the International Conference on Grief and Bereavement in Contemporary Society meets in order to foster international and multi-disciplinary collaboration in research and clinical practice, across cultural and geographical boundaries, in order to enhance grief and bereavement care.

This conference will bring together over 600 delegates from around the world to learn from leading researchers and practitioners by engaging in interactive workshops, world-class keynote lectures and exciting symposia to network with colleagues in the grief and bereavement fields.

Opportunities for professional development will be available to Counsellors, Social Workers, Psychologists, Palliative Care Practitioners, Pastoral Care and Chaplaincy, Funeral Directors and Celebrants, in order to enhance their professional skills. This conference provides the opportunity to network with like-minded professionals within the field and to share your knowledge and practice via the program.

Important dates

- Abstract submission deadline 31 December 2019 at 5PM AEDT
- Early Bird registrations end 17 January 2020 at 5PM AEDT (*Register five employees before 17 January and save \$1000*)
- Registrations close 30 June 2020 at 5PM AEDT

For further information or to register your interest visit icgb2020.com, email conference@grief.org.au or call 03 9265 2100.



In 2016, 158,504 Australians died. On average each death leaves in its wake five bereaved people. Most bereaved people, with the support of family, friends and their community, cope with this loss, however for around six percent of the bereaved their grief is chronic and disabling. Research indicates that these individuals benefit from more specialist bereavement care.

The Australian Centre for Grief and Bereavement (ACGB) is an independent, not-for-profit organisation which opened in January 1996. As the largest provider of grief and bereavement education in Australia, ACGB has been providing support for bereaved and grieving Australians for over 22 years.

Registered as a public benevolent institution, ACGB receives operational funding through the Palliative Care Program of the Victorian Department of Health.

Its mission is to build the capacity of individuals, organisations and communities in order to enhance wellbeing following adverse life events. We know from the many hundreds of people that have participated in our programs, that these services have made a lasting difference on their lives and their experience of loss.

Upcoming Workshops in Perth

Date and Time	Title
Thur 20 February 9.30am - 4.30pm	Supporting Children and Adolescents Experiencing Grief and Loss
Fri 1 May 9.30am - 4.30pm	Supporting Those Before and After Experiencing a Death
Fri 12 June 9.30am - 4.30pm	Effective Brief Contact in a Single Session

Information and Online Registration

Visit www.grief.org.au

Enquiries

education@grief.org.au

Watch our video to learn who we are and what we do youtu.be/15ALm3y9VvI



10775NAT Graduate Certificate in Bereavement Counselling and Intervention in Western Australia (NEW intake)

Graduate study is an investment in your future

The 10775NAT Graduate Certificate in Bereavement Counselling and Intervention (GCBCI) is a highly sought-after qualification that will give health practitioners theoretical and clinical skills to support patients and clients with both normative and complicated grief reactions.

The ACGB is proud to announce its partnership with Cancer Council WA to deliver the 10775NAT Graduate Certificate in Bereavement Counselling and Intervention (GCBCI) for the first time in Western Australia from 2020.

"We are very pleased to be able to work with Cancer Council WA and look forward to offering our Graduate Certificate in Bereavement Counselling and Intervention (for the first time) to Western Australia-based students"

Donna Plavljanic Manager - Education and Health Promotion.

Make your next career move

Whether you're changing direction or gaining that competitive edge, our leading-class research and graduate certificate program offers a professionally relevant education. Our graduates develop strong connections with community and industry that open the door to an outstanding future.

This course can help open doors to a wide array of employment opportunities in various environments including schools, hospitals, palliative care services, the corporate sector and community health settings.

Express your interest today

If you're considering studies at the ACGB, we'd love to hear from you online: courses@grief.org.au or call us on **1800 642 066**

The Australian Centre for Grief and Bereavement is a Registered Training Organisation (RTO 22004)

What is CareSearch?

CareSearch provides palliative care information and resources for across the life course, across the system, and across the community. Our coverage across the life course is further strengthened via our palliAGED website providing evidence-based information and guidance in palliative care for older people.

What you will find?

Clinical evidence

The latest evidence, implications for practice, and current gaps in research evidence across 15 common symptoms in palliative care. Each topic includes key points on prevalence, assessment and treatment.

Tailored information

Reflecting the different roles in palliative care, you will find practical guidance for health professionals on patient assessment and management, and information for patients and their carers on palliative care and preparing for end of life. Find information for:

- GPs
- Nurses
- Allied health professionals
- Providing culturally safe palliative care for Aboriginal and Torres Strait Islanders
- Patient, carers and families
- Researchers

Finding evidence

Guidance on finding and using evidence as well as curated collections of systematic reviews and grey literature in palliative care.

Education options

Up-to-date listing of education and continuing professional development opportunities including resources to support teaching and learning activities.

For more information visit caresearch.com.au or email us at caresearch@flinders.edu.au.

CareSearch is funded by the Australian Government Department of Health.

What is palliAGED?

PalliAGED is an online, evidence-based guidance and practice resource for health professionals working in aged care. PalliAGED incorporates and updates the evidence-based information previously contained in the Guidelines for a Palliative Approach in Residential Aged Care (APRAC) and the Guidelines for a Palliative Approach for Aged Care in the Community Setting (COMPAC).

Managed by CareSearch, palliAGED supports health professionals to provide best practice palliative care for older Australians. It brings together in one source the evidence from research, information on the context of care, and practical guidance and tools.

What you will find?

Evidence Centre

Evidence on 35+ palliative care related topics, with each including a summary, quality statement and research gaps. Guidance on finding and using evidence is also included.

Practice Centre

Guidance, tools and resources for providing palliative care in aged care. Includes evidence-based pointers on what you can do and learn as a health professional; what your organisation can do; and links to the Evidence Centre. Also includes managing symptoms and medicines, education options and apps for Nurses and GPs.

Information for GPs

Tailored resources and tools to support clinical decision-making and in managing care in different aged care settings.

Practice tip sheets for Nurses and Careworkers

Practical resources that can be used for independent learning or team training. Each sheet covers 37 commonly encountered issues, including self-care and signs of imminent death.

Australian context

Overview of our aged care system, including updates on policy directions, services, consumer focused care and the Royal Commission into Aged Care Quality and Safety.

For the community

Practical pointers to help older persons in aged care and their families/carers proactively plan for end of life.

For more information visit palliAGED.com.au or email us at palliaged@flinders.edu.au.

PalliAGED is funded by the Australian Government Department of Health.

Improve your confidence and care at the end of patients' lives

The End-of-Life Essentials team at Flinders University have ten free online learning modules to assist health professionals to increase their confidence in end of life care for patients.

Kindness, respect and interest in a patient's life story are important factors in end of life care and can make a huge difference by giving patients and their families the chance to talk and prepare for the end of their lives.

The End-of-Life Essentials project places an emphasis on the importance of health professionals recognising when end of life care could play a role, potentially years before the patient's death, and offers patients knowledge and choice at the end of their life.

No matter how skilled or inexperienced, there is the opportunity for staff to grow and learn more with self-reflection provided in each module.

The project also has a downloadable toolkit with a range of resources to assist with implementation of positive changes to improve the quality of end of life care at work.

For more information visit endoflifeessentials.com.au or email eoessentials@flinders.edu.au.

What is it?

Palliative Care Outcomes Collaboration (PCOC) is a national project funded by the Federal Government designed to improve outcomes for patients with life-limiting illness and their families across Australia. Established in 2005, PCOC is recognised as one of the leading international programs using patient reported outcomes to drive quality improvement in palliative care.

How does it work?

- PCOC uses a suite of clinical assessment tools to support clinicians to regularly assess and record symptoms that are important to patients and their families. Clinicians use the scores from these assessments to guide and evaluate the current plan of care. Routine assessment ensures that patients and their families' current needs are addressed and future needs anticipated and planned for.
- PCOC can then provide data and information, which enables services to analyse and guide quality improvement activities.
- Free online educational resources about PCOC are available on the website. Regular training workshops on the use of PCOC are offered for clinical leaders from all health professional disciplines.

For more information, visit the website ahsri.uow.edu.au/pcoc/index.html or contact the PCOC Improvement Facilitators for WA.

Tanya Pidgeon

E: tanya.pidgeon@uwa.edu.au

Natalie Joseph

E: natalie.joseph@uwa.edu.au



The Advance Project™: Specifically designed to support Australian GPs, General Practice Nurses and Practice Managers

The Advance Project™ is a free training program for GPs, General Practice Nurses and Practice Managers, to support a team-based approach to initiating advance care planning and palliative care in general practice. The project is led by HammondCare in collaboration with CareSearch and various health organisations and universities, and is funded by the Australian Government Department of Health.

The training program comprises:

- A practical evidence-based toolkit of resources for GPs, Nurses, Practice Managers, Patients and Carers.
- Online training modules individually tailored to the different roles and learning needs of GPs, Nurses and Practice Managers.
- Tele-mentoring from an experienced Palliative Care Nurse.
- Support for implementing the resources into clinical practice.
- Face-to-face training sessions (at selected locations in WA) currently being delivered by WA Primary Health Alliance (WAPHA).

The online training program is endorsed or accredited by the Australian Primary Health Care Nurses Association (APNA), the Royal Australian College of General Practitioners (RACGP), the Australian College of Rural and Remote Medicine (ACRRM) and the Australian Association of Practice Management (AAPM). The training counts towards your professions' Continuing Professional Development (CPD) requirements.

To register for online training and resources visit The Advance Project™ website - www.theadvanceproject.com.au.

For more information email AdvanceProject@hammond.com.au.

For information about the face-to-face training sessions in WA please contact WA Primary Health Alliance

Email: Roseanne.Adamson@wapha.org.au

Telephone: 08 6278 7962

Mobile: 0428 636 753

Palliative Care WA (PCWA) is the peak body for the palliative care sector across the state

Have you heard about our advance care planning workshops?

PCWA has a range of presentations and interactive workshops on advance care planning. We can come to your workplace or community and cover topics such as:

- What is advance care planning?
- How to have a conversation about death and dying with your family, loved ones and health care providers.
- Exploring your values and preferences for end of life care.
- What is palliative care and when should it be offered?
- Up-to-date information on organ and tissue donation in WA.
- What are the health and lifestyle choices you can make at the end of life?
- How to make an Advance Health Directive, Enduring Power of Guardianship and Enduring Power of Attorney.

To learn more about advance care planning go to youonlydieonce.com.au. To find out more about our workshops go to palliativecarewa.asn.au or contact us on info@palliativecarewa.asn.au.

Are you a member?

Our members are our strongest asset. A committed and diverse membership base is vitally important to ensuring we have a strong, independent and collective voice to advocate for sector development and improvements in access to quality palliative care for all Western Australians.

As a member you receive:

- Regular e-newsletters with sector developments, events and other news.
- Networking opportunities at PCWA events.
- Free access to our forums.
- Opportunities to submit content for consideration in our publications and website and present at events.
- Opportunities to join sector-wide working groups, committees and other collaborations.
- Access to resources and news updates from Palliative Care Australia and other allied organisations.

To join or find out more about membership please go to palliativecarewa.asn.au.

Information.

Cancer Council Western Australia

cancerwa.asn.au

WA Cancer and Palliative Care Network

ww2.health.wa.gov.au/Articles/U_Z/WA-Cancer-and-Palliative-Care-Network

Department of Health WA; Advance health directives

ww2.health.wa.gov.au/Articles/A_E/All-about-Advance-Health-Directives

Advance Care Planning

advancecareplanning.org.au

Palliative Care WA

palliativecarewa.asn.au

Office of the Public Advocate

publicadvocate.wa.gov.au

Palliative Care Australia

palliativecare.org.au

National Rural Health Alliance Inc.

ruralhealth.org.au

Carers Australia

carersaustralia.com.au

Cancer Australia - Funded by the Australian Government

canceraustralia.gov.au

Guidelines for a Palliative Approach in Community Aged Care

health.gov.au/palliativecare

Guidelines for a Palliative Approach in Residential Aged Care

health.gov.au/palliativecare

Start2talk

dementia.org.au/planning-ahead

dementia.org.au/planning-ahead/health-professionals

My values

myvalues.org.au

Dying to talk

dyingtotalk.org.au

PCOC - Clinical Assessment and response

ahsri.uow.edu.au/pcoc/4clinicians/clinical-assessment-and-response/index.html

Advance Care Planning Resources - Health Professionals

cancerwa.asn.au/resources/2018-10-10-PaSCE-ACP-Resources-Health-Professionals.pdf

Advance Care Planning Resources - Patients

cancerwa.asn.au/resources/2018-10-10-PaSCE-ACP-Resources-Patients.pdf

Education.

Palliative and Supportive Care Education (PaSCE)

cancerwa.asn.au/professionals/pasce

Online event registration: <https://bit.ly/pasce1>

CareSearch - Palliative care knowledge network

caresearch.com.au

Therapeutic Guidelines, Palliative Care, Version 4, 2016 'Independent evaluation of the evidence'

tg.org.au

End-of-Life Essentials

endoflifeessentials.com.au

PCC4U - Palliative Care Curriculum for Undergraduates

www.pcc4u.org

Centre for Palliative Care

www.centreforpallcare.org/page/95/professional-development

Australian Centre for Grief and Bereavement

grief.org.au

Advance Care Planning

advancecareplanning.org.au/resources/education-and-training

Advance care planning for nurses in general practice

www.caresearch.com.au/caresearch/tabid/4079/Default.aspx

Cancer Australia

Cancer Learning is a portal of educational modules. It is self-directed learning packages for health professionals working in cancer care. Open to students and consumers.

cancerlearning.gov.au

EdCan - national cancer nursing education project

EdCan is online modules and resources, providing support and knowledge for all cancer nurses regardless of experience or setting.

edcan.org.au

PCOC - Palliative Care Outcomes Collaboration

ahsri.uow.edu.au/pcoc/4clinicians/essentials-course/index.html

ELDAC End of Life Direction for Aged Care

The ELDAC project aims to improve the care of older Australians - for all HP in Aged Care

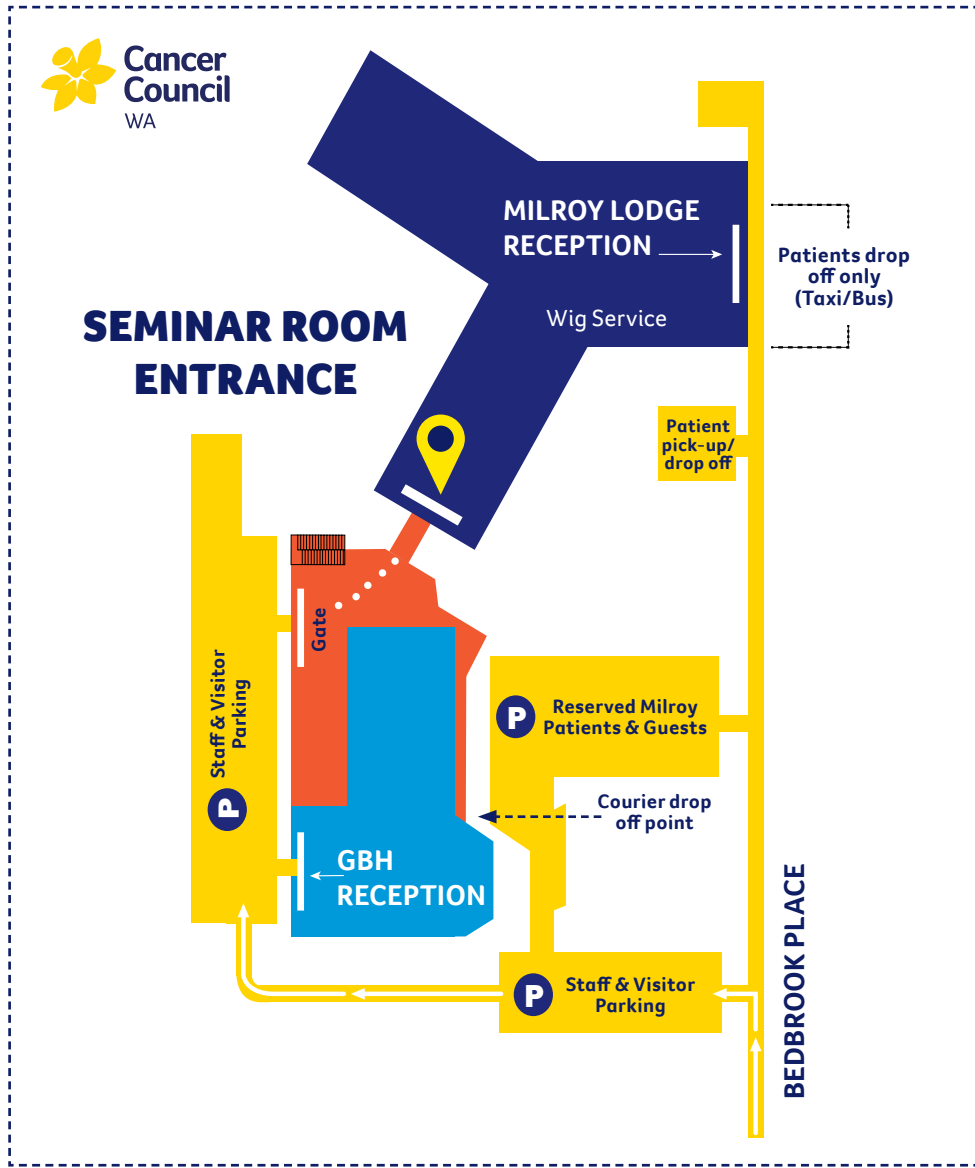
www.eldac.com.au

Australian Indigenous HealthInfoNet

Supporting Aboriginal and Torres Strait Islander People at the end of life Health Infonet.

healthinfont.net.ecu.edu.au/learn/health-system/palliative-care

Getting to Cancer Council WA Seminar Room.

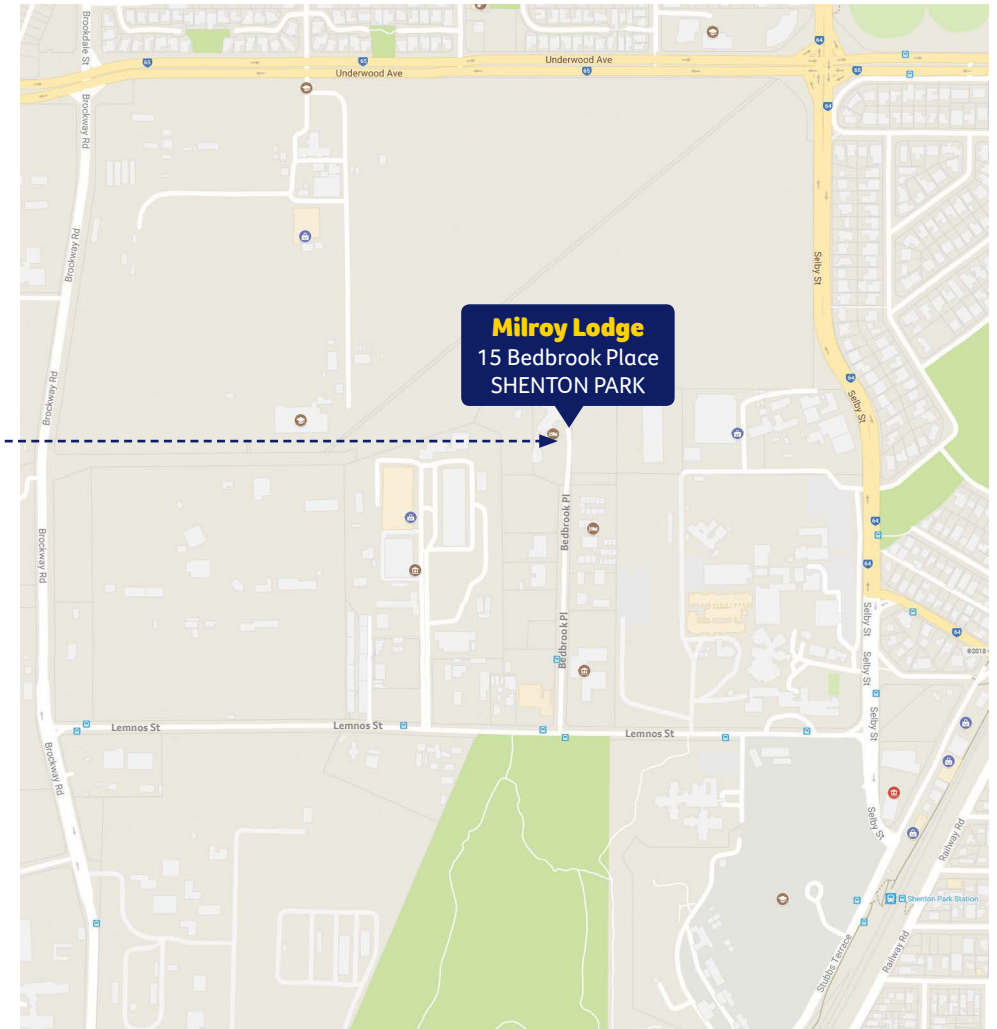


Cancer Council WA. Milroy Lodge - Shenton Park

Accommodation for country cancer patients

Phone: 08 9382 9333

Fax: 08 9382 9330



We're your compass through cancer.

We're here to help everyone affected by cancer by connecting you with a range of support services.



Cancer Council Western Australia

Palliative and Supportive Care Education

Level 1, 420 Bagot Road, Subiaco

Phone: 08 9382 9300

Fax: 08 9212 4334

Email: pasce@cancerwa.asn.au

cancerwa.asn.au/professionals/pasce