



Thank you for joining us as we learn about

Primary Sense – Benefits to General Practice

Presented by: [WA Primary Health Alliance](#)

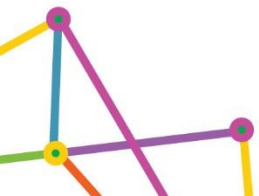
06/12/2022



WA Primary Health Alliance acknowledges, and pays respect to, the Traditional Owners and Elders of this country. We recognise their diversity and the significant importance of their cultural heritage, values, beliefs and self-determination in contributing to the positive health and wellbeing of the whole community.



Koorn Koori Danjoo (*Coming Together*)
John Walley 2018



Upcoming WA Primary Health Alliance events



2023

Gender Diversity & Transgender Health Series

Being held in March 2023, TGDNB is a general overview including definition of terms and language, introduction to TGDNB health and creating welcoming clinical environments. Open to all of practice including GPs, practice nurses, Aboriginal health workers, Aboriginal health practitioners and practice managers.

Tuesday 7th March 2023 @ 18:00 - 20:00

Session 1: Trans, Gender Diverse and Non-Binary Health - General Overview

Tuesday 21st March 2023 @ 18:00 - 20:00

Session 2: Trans, Gender Diverse and Non-Binary Health - Children and Adolescents

Tuesday 4th April 2023 @ 18:00 - 20:00

Session 3: Trans, Gender Diverse and Non-Binary Health – Adult Health

All details see: <https://www.wapha.org.au/events/>





PRIMARY
SENSE

Primary Sense

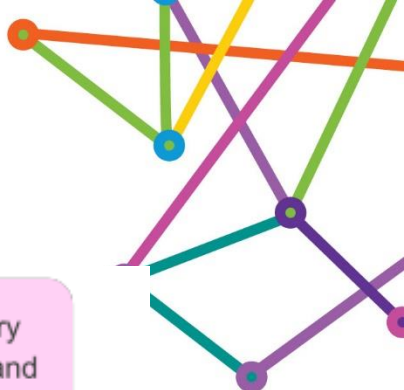
Simple to install

Simple to use

Focused on quality and Safe Care

[Short Video](#)

What are practice staff saying about Primary Sense




Fit for practice.
It's what general practices require relating to practice workflow for a fee-for-basis service.

Where has
Primary Sense
been all my life?

Primary
Sense is so
easy to use
and train
others.

Love that Primary
Sense identifies and
reports all booked
patients in the next
two weeks with
missing PIP QI
measures.



Streamlines care
for high complexity
4 & 5, made my
role as a Care Plan
Nurse easier.

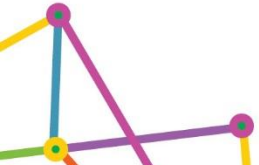
Thought it
was great
and didn't
have to pay.

Much easier to use and
don't have to train new staff.
Staff are all pulling the
same data and not needing
to apply filters.

Primary Sense will
save my nurses
from pulling reports
manually.

Benefits of Primary Sense

- Free (Fully subsidised for general practice in WA)
- Includes the worlds leading population health analytics software (ACG System)
- Extracts data every few minutes
- Provides GPs with clinical decision support via prompts and medication alerts
- One click reporting
- Report and related supports for Continuous Quality Improvement in practice.
- Deidentifies data before it leaves the practice
- Patients can opt out of sharing their de-identified data.




Demonstration



Practice Assist Primary Sense Resources

Practice Assist Website

practiceassist.com.au

					
Primary Sense Data Tool	Practice Connect Newsletter	Practice Resources	Webinars and Events	Quality Improvement (QI) Tool Kit	COVID-19 Information and Resources

Primary Sense Resources

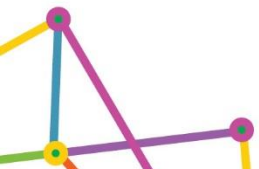
- [Practice poster](#) to print and use in waiting rooms.
- [Components infographic](#)
- [Benefits infographic](#)

Fact sheets:

- [Why WAPHA is Making the Change](#)
- [Data Extraction and Governance](#)
- [For General Practitioners](#)

Manuals

- [Desktop Navigation Guide \(Practice Assist version\)](#)
- [Managing Reports](#)
- [Using Prompts](#)
- [Managing Medication Safety Alerts](#)
- [Patient Opt In/Out](#)
- [Using Continuous Quality Improvement \(CQI\)](#)
- [Performance Dashboard](#)
- [COVID-19 Vulnerable Patients Report](#)



Practice Assist Primary Sense Resources

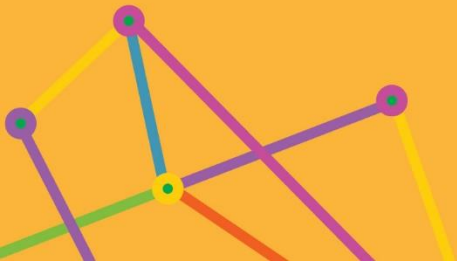
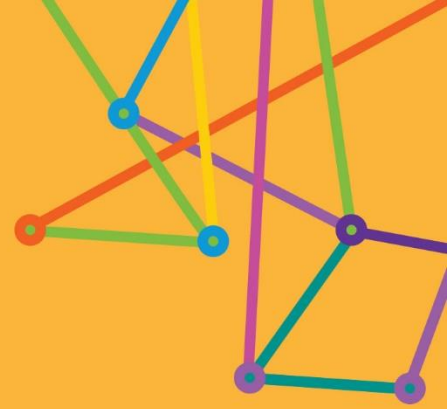
Primary Sense Resources

					
Primary Sense Data Tool	Practice Connect Newsletter	Practice Resources	Webinars and Events	Quality Improvement (QI) Tool Kit	COVID-19 Information and Resources

Videos:

- [Introducing Primary Sense \(0.59\)](#)
- [How Primary Sense Works \(4.32\)](#)
- [Making the most of Primary Sense webinar \(43.40 hosted by a GP\)](#)
 - [Medication Alert \(1.34\)](#)
 - [Patient Opt Out \(1.31\)](#)
 - [Using Reports \(1.54\)](#)
- [Pregnant and Vaccinations Report \(7.44\)](#)
- [The Johns Hopkins ACG Tool \(3.33\)](#)

Questions & Answers



Don't forget to connect
with us...



wapha.org.au



[/waphaphns](https://www.facebook.com/waphaphns)



[@wapha_phns](https://twitter.com/wapha_phns)



[@wapha_phns](https://www.linkedin.com/company/wapha_phns)



phexchange.wapha.org.au



news.wapha.org.au/subscribe/



**We hope you
enjoyed this session.**

Thank you.

