



SPARC COVID

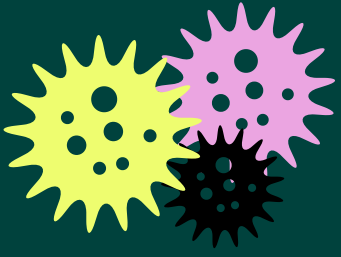
Statewide Paediatric and Adolescent Remote Care Service



Covid Care @ Home

SPARC COVID service facilitates virtual home monitoring (telephone and telehealth reviews) for children across WA with significant underlying medical conditions associated with increased risk of severe COVID disease.

email: CAHS.SPARCCOVIDclinic@health.wa.gov.au



INFORMATION FOR CLINICIANS

SPARC COVID service is available for eligible children with underlying conditions that may predispose to more severe disease or have requirements for additional support.

SPARC COVID will monitor children during their acute illness (typically 7-10 days from positive test).

24/7 on call support for families accepted by the service to contact if concerned.

SPARC COVID nurses and doctors (PCH staff) care for COVID +ve children with significant underlying medical conditions alongside their usual treating teams, as a part of Covid Care @ Home.

We recommend that all teams identify their at risk patients and become familiar with SPARC referral processes.

Who is eligible for SPARC COVID?

High Risk Comorbidities

- Active cancer/significantly immunosuppressed
- Organ transplant recipient including bone marrow transplant
- Dialysis
- Under 4 weeks of age (corrected)
- Home respiratory support - (oxygen, CPAP, BiPAP) or tracheostomy
- Down Syndrome

Moderate Risk Comorbidities

- Chronic lung disease (e.g. cystic fibrosis, unstable asthma)
- Congenital heart disease or other heart conditions
- Diabetes (T1 and T2)
- Significant disability
- BMI >99th centile
- Immunosuppression
- Palliative care
- Metabolic conditions

How do I refer to SPARC COVID?

1) Families 'Opt in' for assessment of eligibility of Covid Care @ Home via the Department of Health

- PCR positive - patient/family will receive a DoH text message with option to 'opt in' for CC@H assessment

- RAT positive - patient/family register RAT on DoH website and will be assessed for CC@H eligibility during registration process

2) eReferral pathway

Referrals for patients with risk factors who are currently stable and within 7 days of +COVID test can be made by clinicians directly to SPARC via eReferral, including:

- patients being discharged from the ED or inpatient wards
- outpatients known to a hospital treating team

Referrals are reviewed daily and referring clinician notified of the outcome.

For patients accepted to SPARC COVID following an inpatient or ED visit, the first telehealth appointment will be the following day.

Emailed referrals are accepted for clinicians without eReferral access for select patient groups (e.g. community child health).

3) Clinician discussion with SPARC Consultant on call.

Clinicians can contact the SPARC COVID consultant via switchboard to discuss patient eligibility if required, with follow up email referral to SPARC COVID.

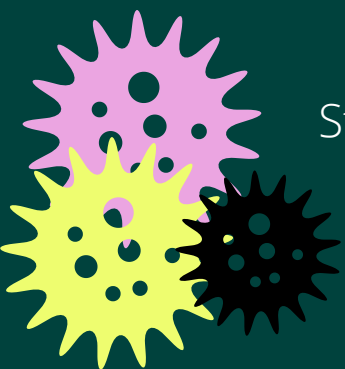
Please note

Most COVID-positive children are at low risk of significant disease and can be cared for safely at home by their caregivers without additional support. The majority of children will not require SPARC COVID monitoring.

Non-COVID related medical issues (e.g. symptoms relating to the underlying medical condition) will continue to be managed by the relevant treating team.

Please ensure families are reminded of their usual sick day management plans provided by their relevant treating team.

Further information regarding the Covid Care @ Home program through DoH is available at: WA COVID Care at Home (healthywa.wa.gov.au)



SPARC COVID

Statewide Paediatric and Adolescent Remote Care Service
email: CAHS.SPARCCOVIDClinic@health.wa.gov.au

Quick Guide:
Who to refer...

Covid Positive patients with the following risk factors should be referred to SPARC COVID

High Risk

- Active cancer/significantly immunosuppressed
- Organ transplant recipient including bone marrow transplant
- Dialysis
- Under 4 weeks of age (corrected)
- Home respiratory support - (oxygen, CPAP, BiPAP) or tracheostomy
- Down Syndrome

All Covid +VE
Opt in for CC@H
assessment

Moderate Risk

- Chronic lung disease (e.g. cystic fibrosis, unstable asthma)
- Congenital heart disease or other heart conditions
- Diabetes
- Significant disability
- BMI >99th centile
- Immunosuppression
- Palliative care
- Metabolic conditions



How to refer...

Families 'Opt in' for Covid Care @ Home assessment via the Department of Health screening SMS or website

Families of COVID +ve children should be advised to **'opt in'** to the DoH SMS* for assessment of eligibility by COVID Care @ Home services.

*Or register via WA Health COVID Care @ Home website

or

eReferral

Referrals can be made directly to SPARC from the ED, inpatient wards or outpatient teams for COVID-19 positive patients with risk factors who are currently stable and within 7 days of +ve COVID test

Clinicians can discuss with SPARC **Consultant on call.**

Clinicians can contact the SPARC COVID consultant via **switchboard** to discuss patient eligibility if required.

or