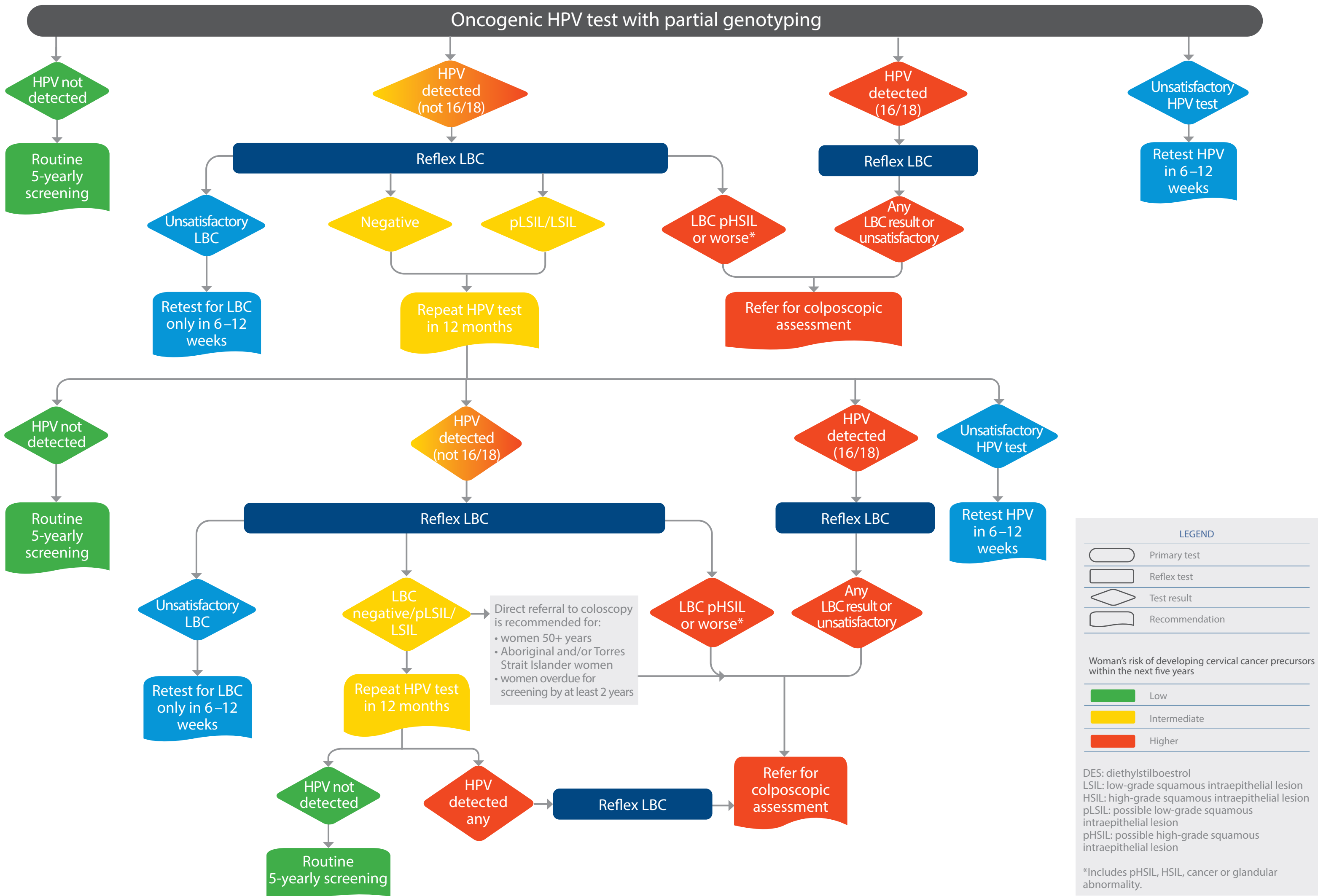
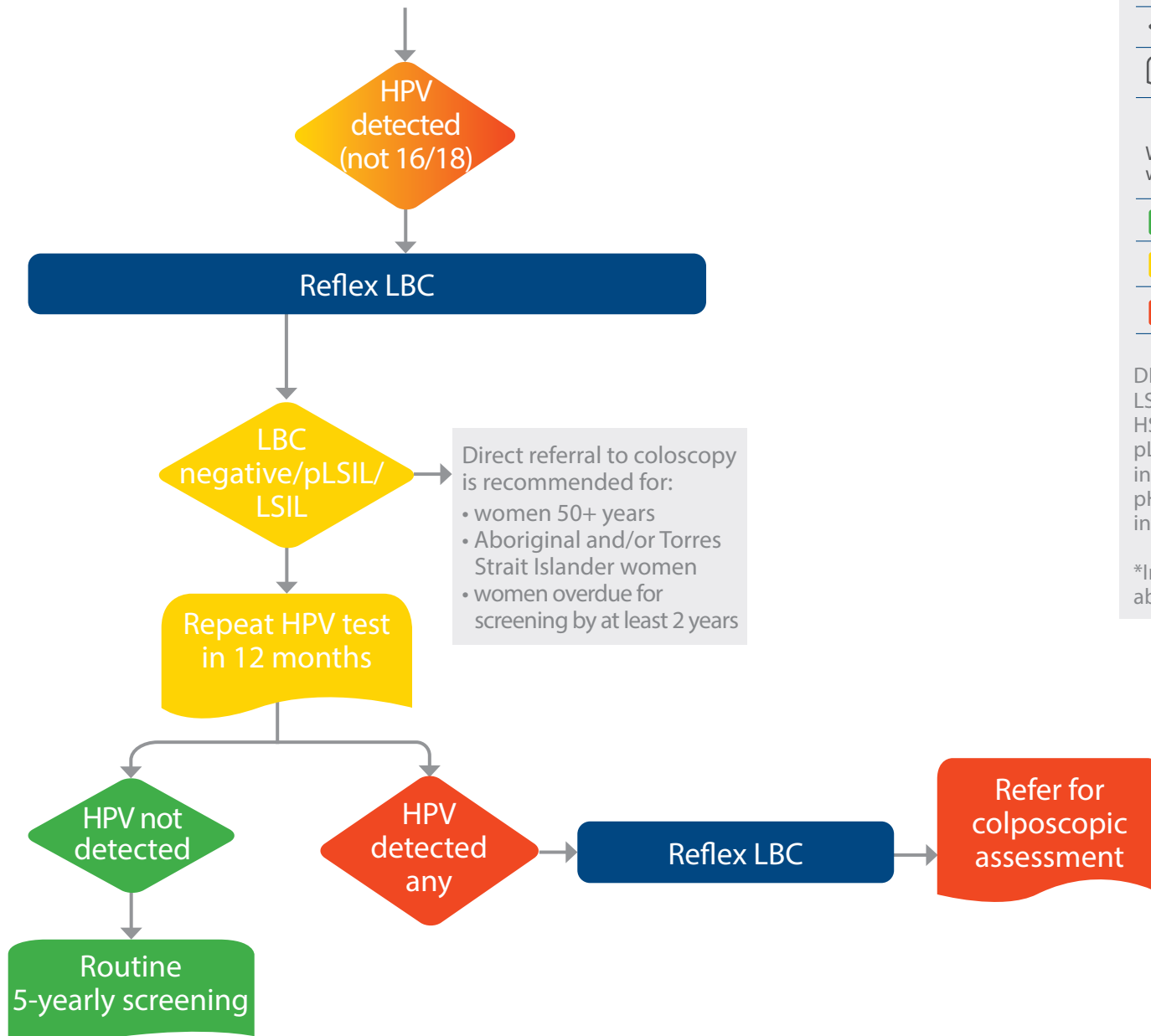


CERVICAL SCREENING PATHWAY



CERVICAL SCREENING PATHWAY



LEGEND

	Primary test
	Reflex test
	Test result
	Recommendation

Woman's risk of developing cervical cancer precursors within the next five years

	Low
	Intermediate
	Higher

DES: diethylstilboestrol
 LSIL: low-grade squamous intraepithelial lesion
 HSIL: high-grade squamous intraepithelial lesion
 pLSIL: possible low-grade squamous intraepithelial lesion
 pHSIL: possible high-grade squamous intraepithelial lesion

*Includes pHSIL, HSIL, cancer or glandular abnormality.

Suggested citation: Cancer Council Australia Cervical Cancer Screening Working Party. Clinical pathway: Cervical screening pathway. National Cervical Screening Program: Guidelines for the management of screen detected abnormalities, screening in specific populations and investigation of abnormal vaginal bleeding. CCA 2016. Accessible from http://wiki.cancer.org.au/australia/Guidelines:Cervical_cancer/Screening. Updated Dec 2020.